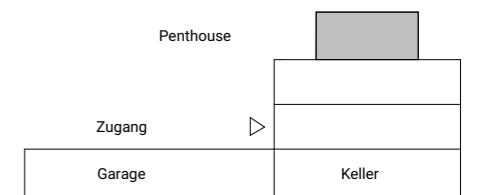
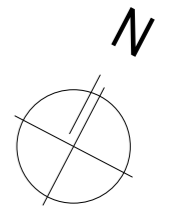
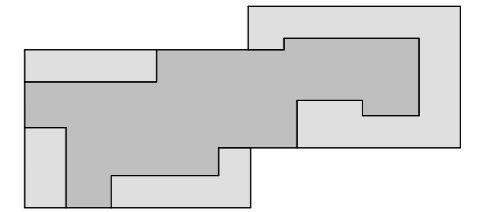
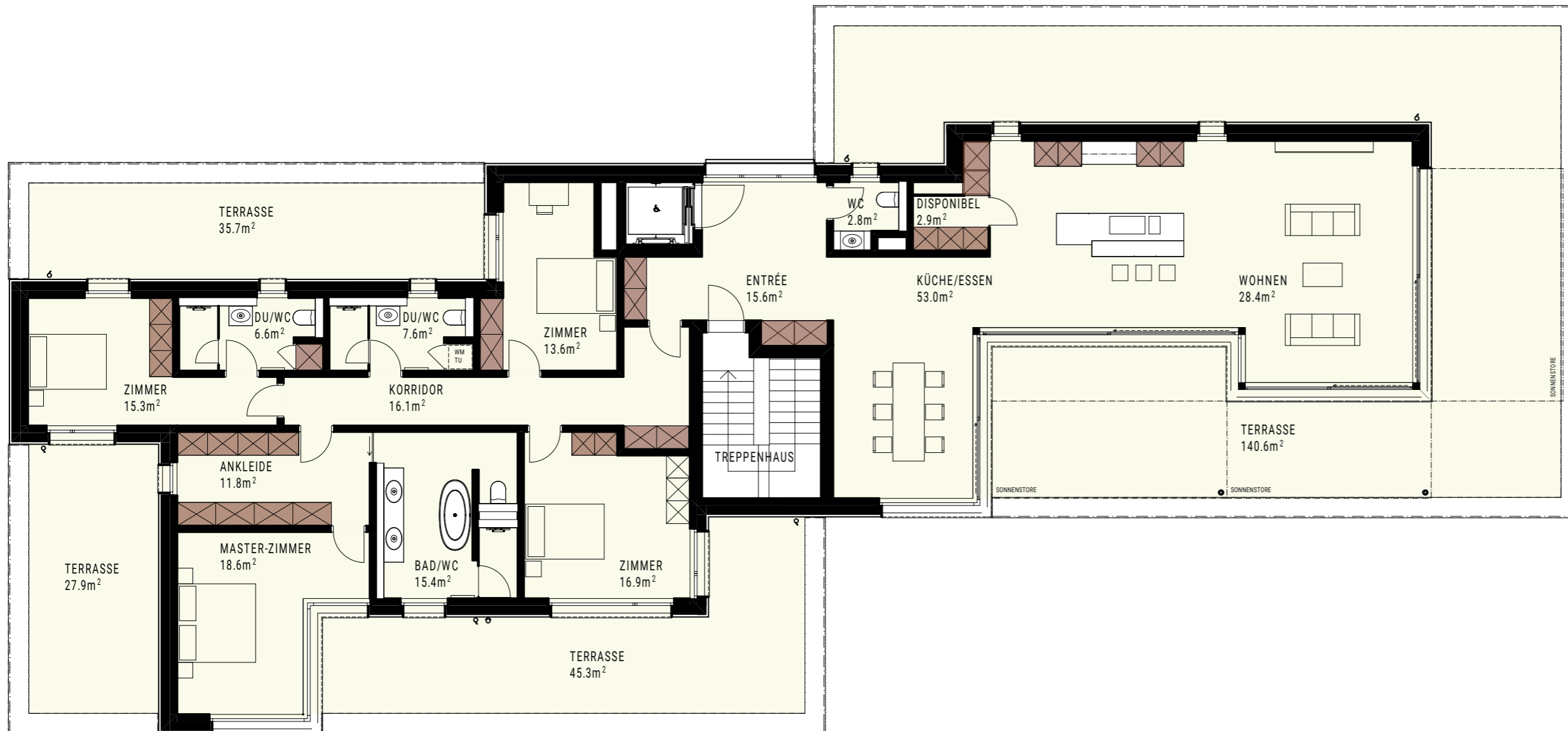




# KRIENBÜHL

IMMOBILIEN AG

Konradshalde 11  
8832 Wilen b. Wollerau



## 5 1/2 Zimmer-Wohnung

Geschossfläche	GF	302.0 m <sup>2</sup>
Nutzfläche	NF	228.0 m <sup>2</sup>
Aussen-Nutzfläche	ANF	49.5 m <sup>2</sup>
Raumhöhe im Licht		2.55 m

**Whg.11.8.1**

