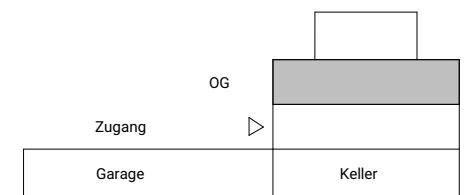
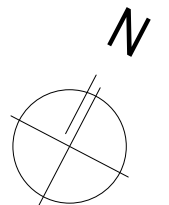
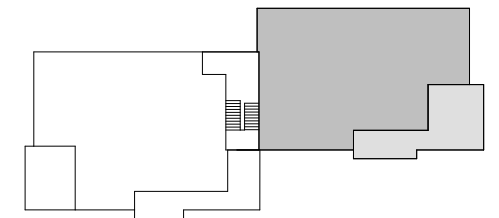
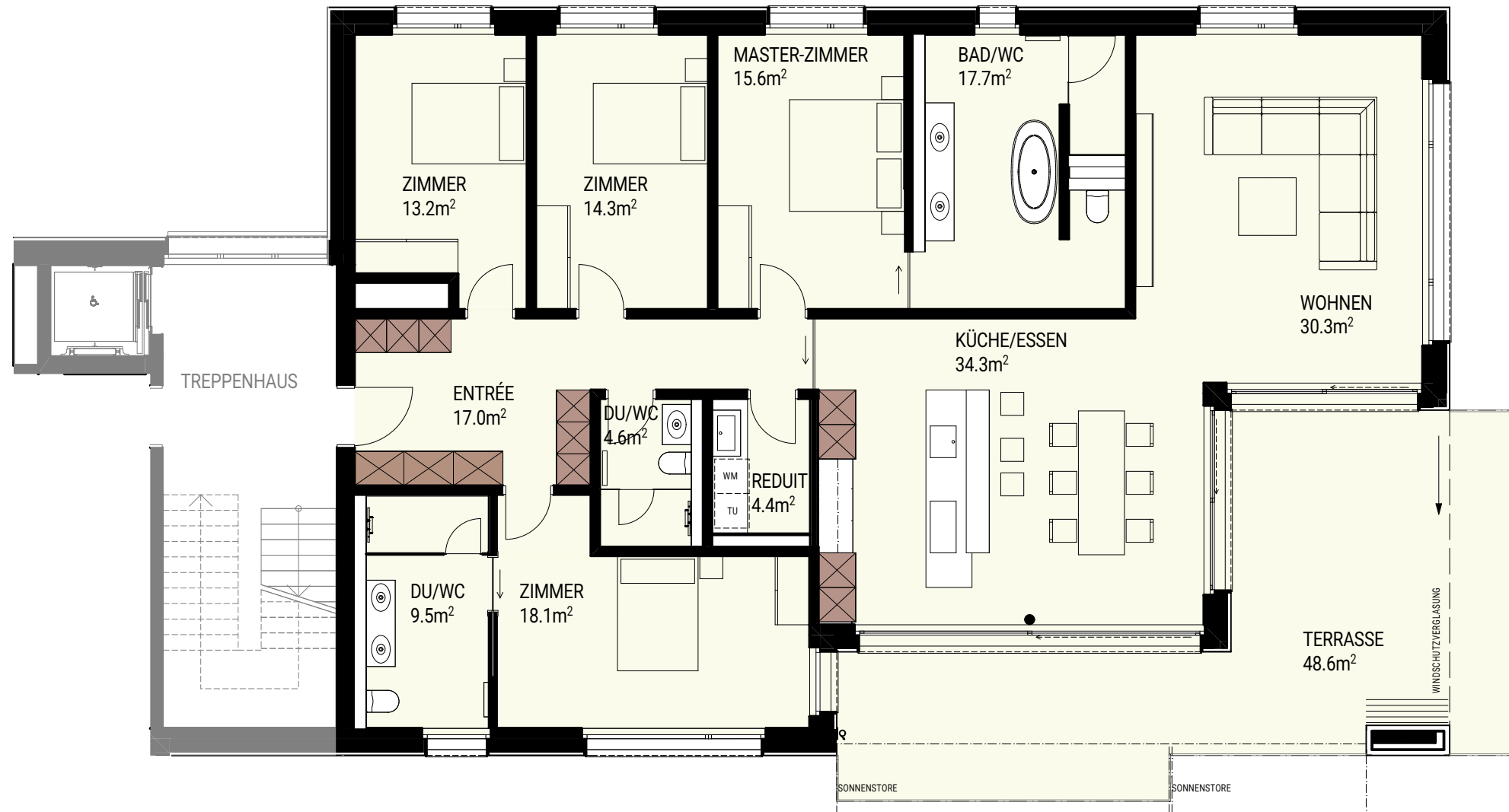




KRIENBÜHL

IMMOBILIEN AG

Konradshalde 11
8832 Wilen b. Wollerau



5½ Zimmer-Wohnung

Geschossfläche	GF	217.0 m ²
Nutzfläche	NF	181.0 m ²
Aussen-Nutzfläche	ANF	48.6 m ²
Raumhöhe im Licht		2.62 m

Whg.11.7.1

